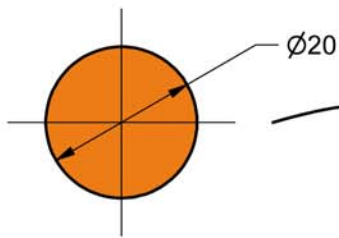
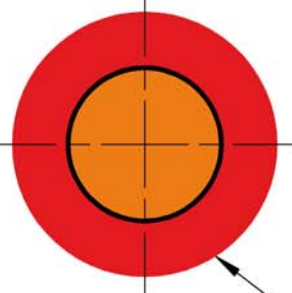


Arbre porte fraise de votre motobineuse :



Les douilles d'adaptation des disques Bio-Butteur:

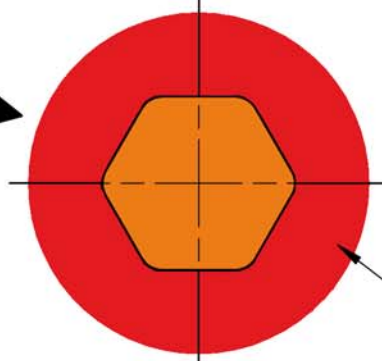
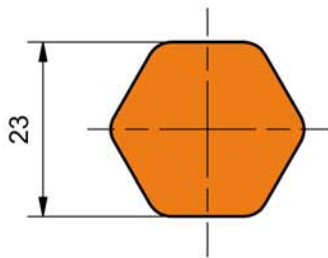


Ensemble Bio-Butteur $\varnothing 260$ moyeu $\varnothing 20.5$

Disque Bio-Butteur

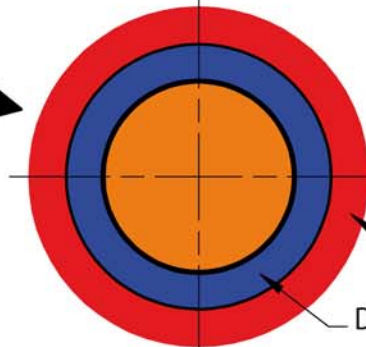
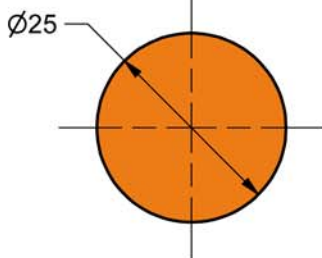
Disque Bio-Butteur $\varnothing 260$

Disque Bio-Butteur $\varnothing 330$ avec axe hexagonal H23



Disque Bio-Butteur

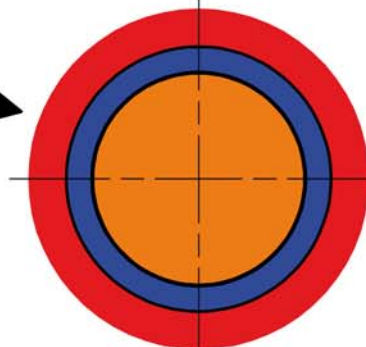
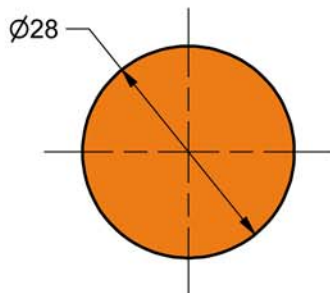
Disque Bio-Butteur $\varnothing 330$



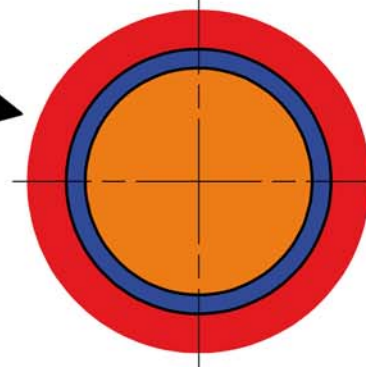
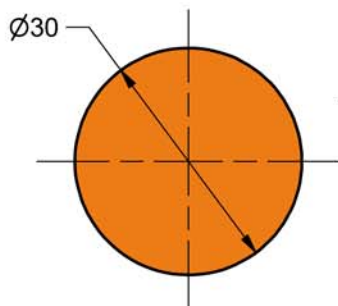
Ensemble Bio-Butteur $\varnothing 330$ avec douille $\varnothing 25.6$

Disque Bio-Butteur

Douille d'adaptation



Ensemble Bio-Butteur $\varnothing 330$ avec douille $\varnothing 28.3$



Ensemble Bio-Butteur $\varnothing 330$ avec douille $\varnothing 30.3$